

FREELANDER

FREELANDER

Ready for the journey.



COACHMEN



The Spacious Kitchen of the 31SA (shown with Chasworth Creme decor)



21QB Front to back view (shown with Nutmeg decor)



21QB Cab area.



True 60" x 80" Residential size queen bed.

Sleeping Comfort- The whole family will enjoy the Frelander's sleeping accommodations thanks to floor plans that offer "true" residential size 60" X 80" queen beds, bunk beds and spacious cab-over lofts. If you need more sleeping areas, all sofas and dinettes convert quickly and easily into additional beds.

Entertainment Features- Don't miss the big game, your favorite TV shows or blockbuster movies while enjoying the great outdoors. With large LCD/HD TV's, DVD players and game console inputs you will have the comforts of home anywhere your travels might take you.

Durability and thoughtful design- Built to last, the Frelander offers many upgraded features found in only the most expensive motorhomes. Some of these upgrades include "Beauflor" anti-skid and cold crack resistant flooring, stainless steel sink with high-rise faucet, one piece Thermofoil countertops, solid wood cabinet doors with mortise and tenon joints and a centrally located systems panel.



32BH Bunk area with entertainment system.

Frelander Interior Advantages

The Galley and Entertainment Area of the 31FK (shown with Lonestar decor)



1. 80" X 60" Queen bed- a full residential size queen bed offers you more comfort and more room for a great nights sleep.
2. Beauflor™ brand linoleum flooring- easy to clean with a "real wood" look, non-skid surface and cold-crack resistant with a 2 year warranty.
3. Stainless steel double bowl sink with high-rise faucet- the durability of stainless steel coupled with a high rise faucet makes cleaning cookware a snap.
4. Large LCD televisions and DVD players- manufactured especially for motorhome use, tested for durability, the large screens are great for watching TV or gaming.
5. Thermofoil countertops- lightweight and durable, no self-edge or T-molding that will deteriorate and come apart over time.

FREELANDER

Ready for the journey.



Coachmen's Even Cool™ air conditioning system is ducted through the crowned, vacuum-bonded roof. The system uses AMOCO insulated ductwork with radiused corners to provide maximum cooling efficiency. (Most models)

TPO roof membrane- lightweight, durable and easy to maintain.



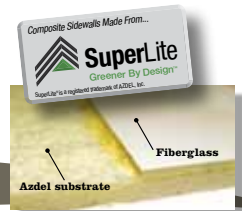
Slide room awnings to protect your slide room from debris.



2" Aluminum high gloss sidewalls.



Warehouse Exterior Storage — more than 100 cu. ft. available.



Azdel SuperLite™ sidewall substrate, lightweight, durable and moisture resistant.

Fresh Water System



50 Gallons of Fresh Water. On average 20% More than the competition.



Integrated entry step with 80 inch door.



Standard gas generator will keep you going at your favorite destinations.



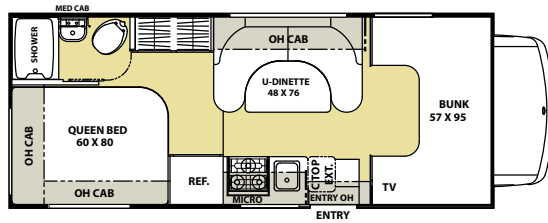
Frelander's one touch power awning features adjustable arms for ease of use.



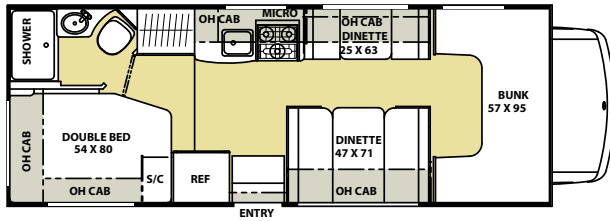
Dash stereo with touch screen control and integrated back-up monitor.



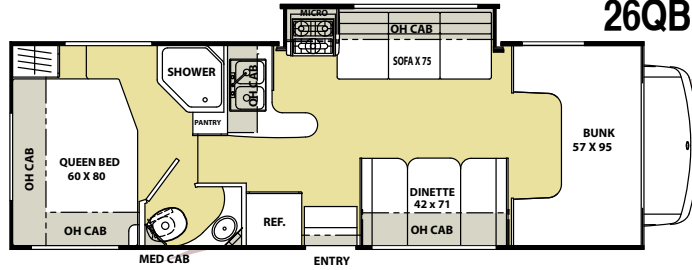
21QB



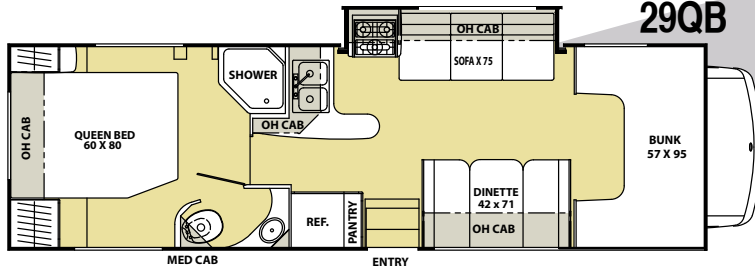
23CB



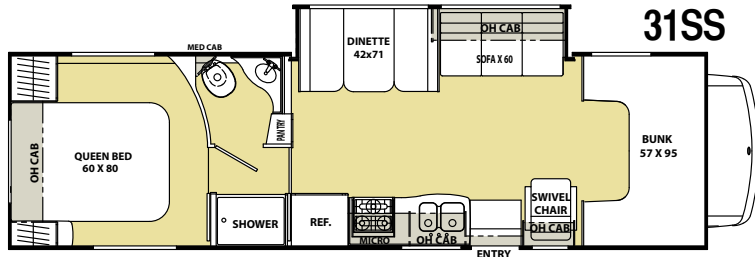
26QB



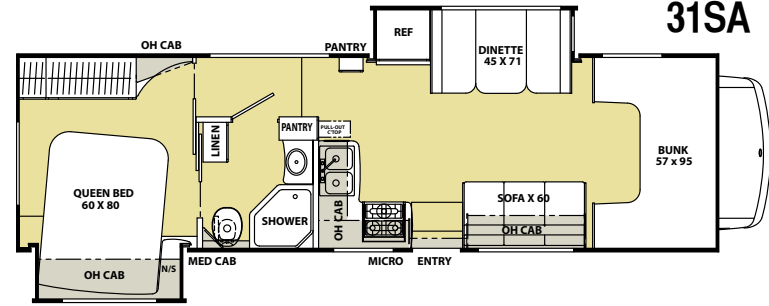
29QB



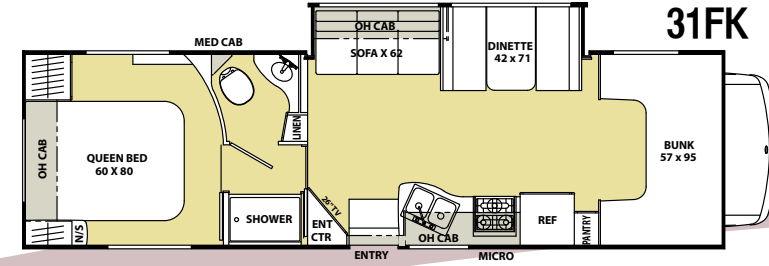
31SS



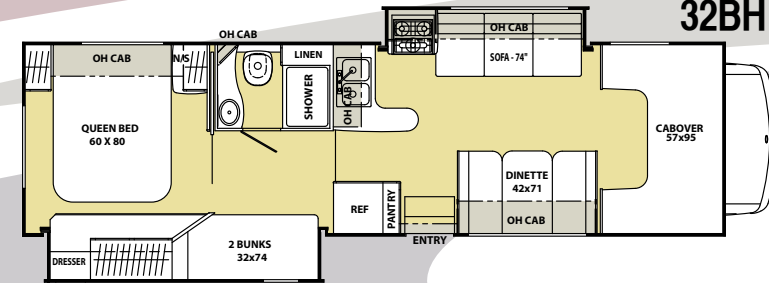
31SA



31FK



32BH



SPECIFICATIONS

MODEL	21QB	23CB	26QB	29QB	31SS	31SA	31FK	32BH
CHASSIS	3500-CHEVY / 350-FORD / 450-FORD	350-FORD	450 FORD	450 FORD	450 FORD	450 FORD	450 FORD	450 FORD
ENGINE	V8-6.0L / V10-6.8L / V10-6.8L	V10-6.8L	V10-6.8L	V10-6.8L	V10-6.8L	V10-6.8L	V10-6.8L	V10-6.8L
HORSE POWER	323 / 305 / 305	305	305	305	305	305	305	305
TORQUE	373 / 440 / 440	440	440	440	440	440	440	440
WHEEL BASE	159" / 158" / 158"	182"	190"	208"	223"	223"	223"	223"
GVWR (LBS.)	12,300 / 12,500 / 14,500	12,500	14,500	14,500	14,500	14,500	14,500	14,500
GCWR (LBS.)	17,500 / 18,500 / 20,000	18,500	20,000	20,000	20,000	20,000	20,000	20,000
UWV (APPROX. LBS.)	9,067 / 9,087 / 9,336	10,058	11,133	11,108	11,618	12,008	11,868	12,316
CCC (APPROX. LBS.)	3,233 / 3,413 / 5,164	2,442	3,367	3,392	2,882	2,492	2,632	2,184
GAWR FRONT (LBS.)	4,300 / 4,600 / 5,000	4,600	5,000	5,000	5,000	5,000	5,000	5,000
GAWR REAR (LBS.)	8,600 / 8,500 / 9,500	8,500	9,500	9,500	9,500	9,500	9,500	9,500
INTERIOR HEIGHT	6' 11"	6' 11"	6' 11"	6' 11"	6' 11"	6' 11"	6' 11"	6' 11"
EXTERIOR WIDTH	8' 4"	8' 4"	8' 4"	8' 4"	8' 4"	8' 4"	8' 4"	8' 4"
EXTERIOR HEIGHT (W/ A/C)	10' 11" / 10' 10" / 10' 10"	10' 10"	10' 10"	10' 10"	10' 10"	10' 10"	10' 10"	10' 10"
EXTERIOR LENGTH (W/ HITCH)	23' 11" / 23' 6" / 23' 6"	25' 8"	28' 0"	30' 8"	32' 0"	32' 0"	32' 0"	32' 5"
HITCH WEIGHT (LBS.)	5,000	5,000	5,000	5,000	5,000	5,000	5,000	5,000
FUEL CAPACITY (GAL.)	57 / 55 / 55	55	55	55	55	55	55	55
LP CAPACITY (LBS.)	68	68	68	68	68	68	68	68
FRESH WATER CAPACITY (GAL.)	50	50	50	50	50	50	50	50
WATER HEATER CAPACITY (GAL.)	6	6	6	6	6	6	6	6
BLACK TANK CAPACITY (GAL.)	22	22	29	29	25	29	29	29
GREY TANK CAPACITY (GAL.)	25	28	25	29	29	34	40	34
EXTERIOR STORAGE (CU. FT.)	91	93	87	113	100	69	89	77

Standard Features

INTERIOR APPOINTMENTS

Residential Hardwood Cabinet Doors & Drawers
Oil Rubbed Bronze Hardware
"Beauflor" Flooring Throughout
Pleated Night Shade Window Treatments
Radius Slider Windows-Safety Glass
High Quality Upholstery
U-shaped Booth Dinette (21QB)
Booth Dinette (N/A 21QB)
Jackknife Sofa (N/A 21QB)
Interior Safety Grab Handle
Conveniently Placed Light Switches

ENTERTAINMENT EQUIPMENT

TV Power Boost Antenna
Dash Stereo with Touch Screen Controls
Bedroom TV Prep (Mounting Backer, Power Outlet, Cable Hook-up)
Cable TV Prep

GALLEY

Thermofoil Countertops
Residential Size Stainless Steel Kitchen Sink
Hi-Rise Faucet
3-Burner Gas Range
Microwave Oven
Power, Lighted Range Hood
Double Door Refrigerator/ Freezer
Residential Metal Drawer Glides
Flip-up Countertop Extensions (Select Models)

BATH AND PLUMBING

Foot Pedal Toilet
Bathroom Power Vent Fan
Molded Tub Surround
Glass Shower Door
Shower Head with Flexible Hose Extension
Shower Skylight
Lavatory Sink
Medicine Cabinet
Vanity Mirror
Hand Towel Ring, Toilet Paper Holder,
Robe and Towel Hooks
On-Demand Water Pump
6-Gallon Gas Electronic Ignition Water Heater
Tuff-Pex Plumbing Supply Lines
50 Gallon Fresh Water Tank

SAFETY EQUIPMENT

Propane Leak Detector/ Alarm
Smoke Detector/ Alarm
Carbon Monoxide Detector/ Alarm
Fire Extinguisher
Dead Bolt Lock Entry Door
Multiple Seat Belt Locations

SLEEPING

Queen Bed - 60x80
Double Bed - 54x80 (23CB)
Bunk Beds - 32x74 (32BH)
Cab over Bunk
Solid Privacy Door
Shirt Closet and/or Wardrobe

ELECTRICAL/HEATING/AC

"Coach Command" Systems Control Center
13,500 BTU Non-Ducted Roof A/C (21QB & 23CB)
13,500 BTU Ducted Roof A/C (26QB, 29QB,
31SS, 31SA, 31FK, 32BH)
30,000 BTU Ducted Furnace (26QB, 29QB, 31SS,
31SA, 31FK, 32BH)
20,000 BTU Ducted Furnace (21QB & 23CB)
Guardian 40G Series Gas Generator
30 amp Power Cord
55 amp, 12 volt Power Converter
Deep Cycle Coach Battery
GFI Circuit
Battery Disconnect

AUTOMOTIVE

Backup Camera with In-Dash Monitor
Privacy Drape- Lower Cab
Driver & Passenger Air Bags
Cruise Control
Tilt Steering Wheel
Dash Air Conditioning
Reclining Pilot & Passenger Seats
Power Windows & Locks
Keyless Entry (Ford E450 Chassis only)
Dual 12 volt Power Ports
Upgrade Exterior Mirrors
Towing Hitch w/ 7 Way Plug
Hub Caps
Rear Bumper
Aluminum Running Boards

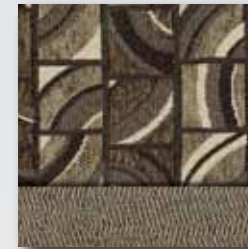
EXTERIOR

Laminated Steel Framed Floor
2" Laminated Aluminum Framed Sidewalls
Laminated Aluminum Frame Crowned TPO Roof
Hi-gloss Fiberglass Exterior Sidewalls

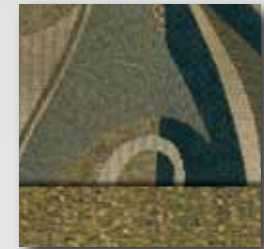
OPTIONAL FEATURES

24" LCD TV w/ DVD - Coach (N/A with Entertainment Package)
Onan 4.0 KW Gas Generator
Stainless Steel Wheel Liners
Air Assist Suspension (26QB, 29QB, 31SS, 31SA, 31FK, 32BH)
Entertainment Package with Coach & Bunk LCD TV's & 3 DVD's
(32BH Only)
Desk/Wardrobe IPO bunk beds (32BH only)
Child Safety Net & Ladder
Rear Ladder
Spare Tire
Campin' Cozy Package (Dual pane windows, Tank heaters)
Canadian CSA Upfit

Decor Options



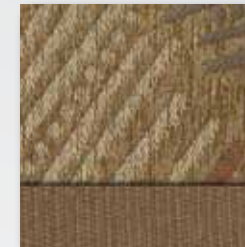
LONESTAR



BIRKDALE
TAUPE



CHASWORTH
CREME



NUTMEG



BRAZILIAN
CHERRY
HARDWOOD

Please note: Due to continuous improvements please visit our website or your local dealer for product updates.



Big benefits for new owners

Owners club discounts and more — A free one-year membership in the Coachmen Owners Association comes with the purchase of any Coachmen product. This add-on value not only provides a host of travel services and campground discounts, but also a 24/7 online service that locates needed services while offering member savings at more than 180,000 merchants across the country. And, of course, the COA is an excellent way to share experiences with other Coachmen owners through rallies and caravans.



Free roadside assistance

Coachmen provides one year of free Travel Easy™ emergency roadside assistance for those who buy a new Coachmen RV. Administered by Coach-Net®, this service gives Coachmen owners 24/7 access to operational, technical and emergency road services, including towing, fuel delivery, jump starts, lockout service, tire changes, mobile mechanic and unlimited technical advice. So no matter where you go, we're ready to help!



GVWR (Gross Vehicle Weight Rating): The maximum permissible weight of the unit, including the unloaded vehicle weight (UVW) plus all fluids, cargo, optional equipment and accessories. For safety and product performance, do not exceed the GVWR. **CW (Curb Weight):** The weight of the unit without factory or dealer installed options, plus allowance for the weight of full fuel capacity. The "payload capacity" for all other fluids, cargo, occupants, optional equipment, and accessories can be determined by subtracting the CW from the GVWR. **GCWR (Gross Combined Weight Rating):** The maximum total weight of the loaded unit, plus a tow vehicle. This includes the weight of both the unit and tow vehicle, fuel for each, all other fluids, cargo, occupants, optional equipment and accessories. **Wider Widths:** Numerous Coachmen floorplans feature the "wide body" design concept, which gives you significantly enhanced interior living space and innovative floorplans. In making your purchase decision, you should be aware that a few states restrict access on some or all roads within the state to vehicle with a maximum 96-inch width, although special road usage permits may be available. Vehicles up to 102-inches in some width are permitted in the vast majority of states. You should confirm the road usage laws in the states of interest to you before making your purchase decision. If width is of concern to you, we invite you to consider the broad array of other Coachmen models offers in the standard 96-inches width.

Important Note: All capacities are approximate, and all dimensions are nominal. Coachmen motorhomes are designed to allow for a wide variety of uses, extended trips with two people or short trips with multiple people. Accordingly, each unit allows ample room for sleeping, seating, fluids and cargo. While the customer is the beneficiary of this design, the customer also bears the responsibility to select the proper combination of passengers, cargo, load, and tow vehicle without exceeding the chassis weight capabilities. Consumer may need additional braking capacity to tow loads greater than 1,000 pounds. Seat belts should always be worn for passenger safety. Seat belts are provided at most locations to allow convenience in selecting which seat to occupy. However, it is not intended that all seating positions equipped with a seat belt may be occupied while the vehicle is in motion, without regard to other weight factors. All Coachmen motorhomes are designed to ensure that the number of passengers allowed while the vehicle is in motion will always at least equal the stated sleeping capacity. Though extra seat belts may be provided, for your safety and the proper operation of your vehicle, limit your passengers to the number allowed by the Net Carrying Capacity of your vehicle.



Coachmen Recreational Vehicle Company
P.O. Box 30, Middlebury, IN 46540

To see how Coachmen is making the easy life even easier, visit www.easyRVing.com or call 1.800.353.7383.

All information contained in this brochure is believed to be accurate at the time of publication. However, during the model year, it may be necessary to make revisions, and Coachmen reserves the right to make all such changes without notice, including changes in prices, colors, materials, equipment and specifications, as well as the addition of new models and the discontinuance of models shown in this brochure. Therefore, please consult with your Coachmen dealer and confirm the existence of any materials, design or specifications that are material to your purchase decision.

Printed in USA

Scan this barcode using a QR Reader on your smart phone to learn more about Forest River and our great products.

